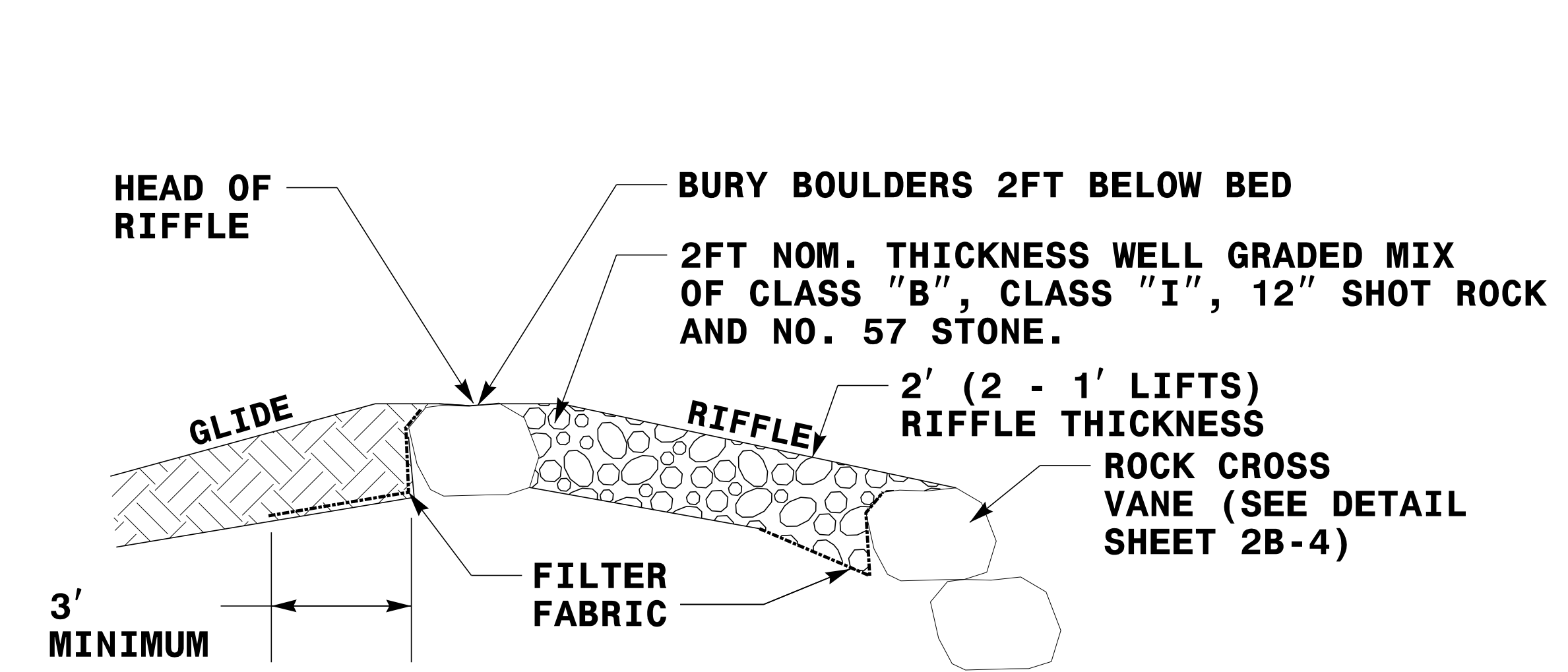
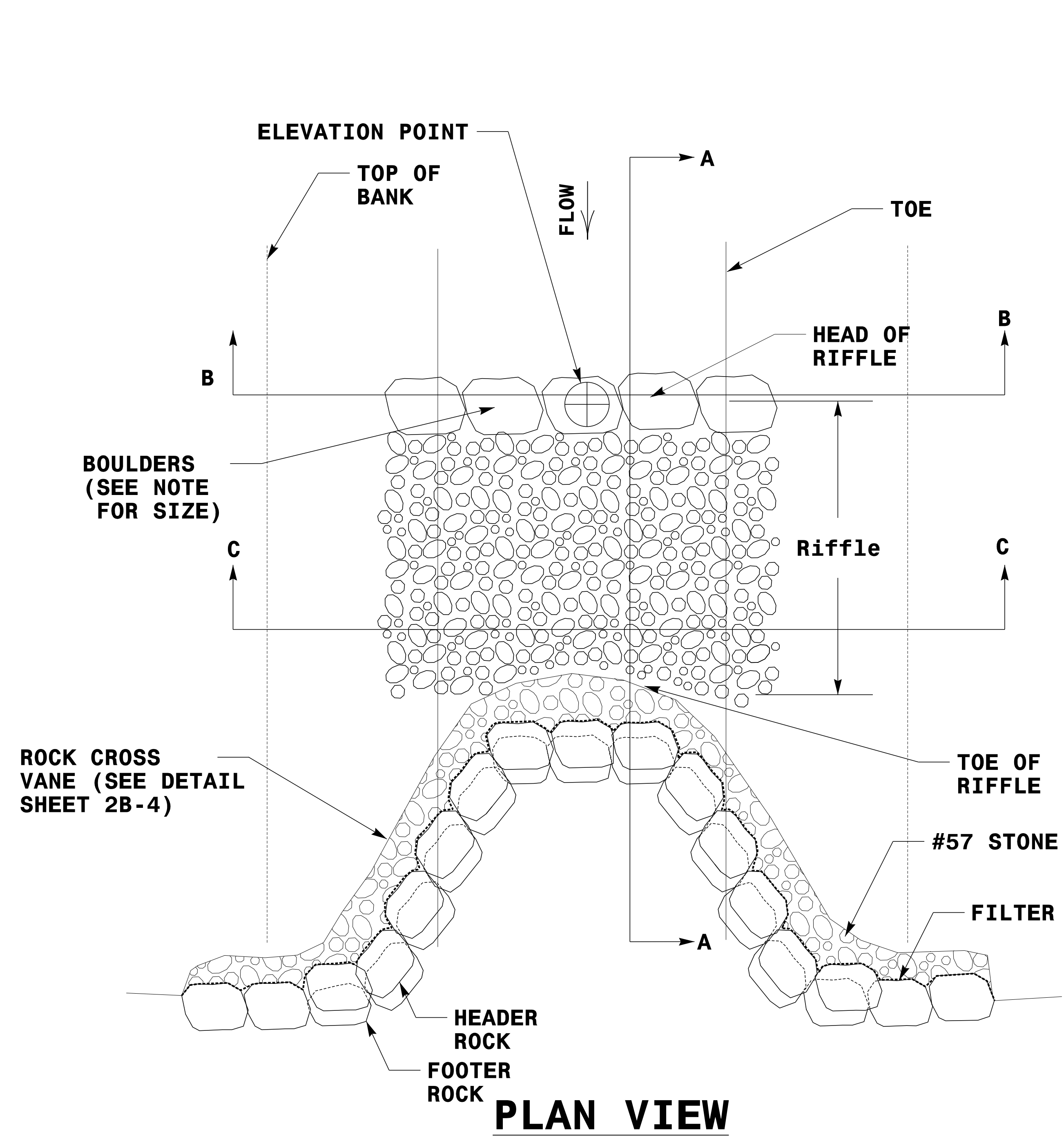
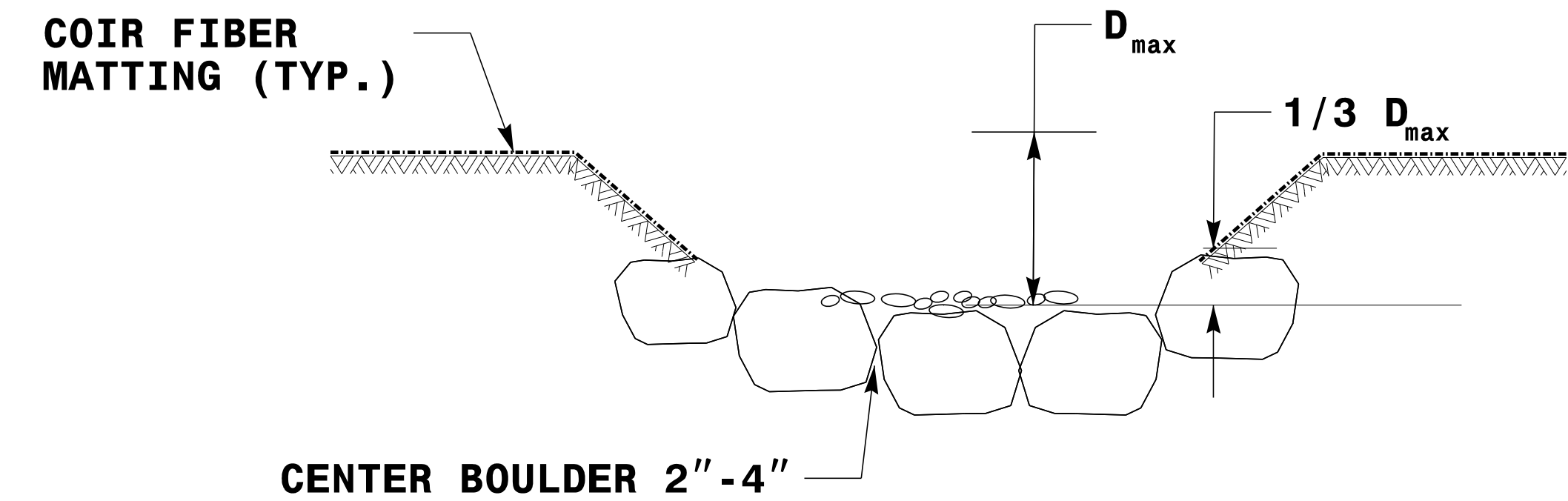


8/17/99

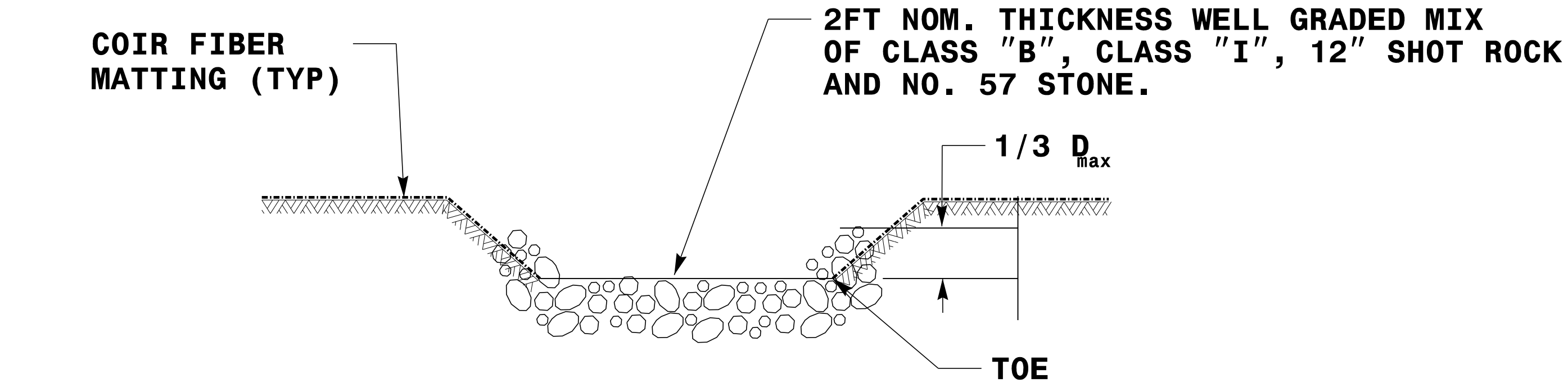
8/18/2025
R:\Recreation\Pro\NRI93_RDY_PSH_2B-3.dgn
Eric Martin



SECTION A-A



SECTION B-B



SECTION C-C

STRUCTURE TYPE	START STATION	END STATION	LENGTH
RIFFLE	10+57.52	10+97.52	40
CROSS VANE	10+97.52	11+19.52	22
RIFFLE	11+32.58	11+77.58	45
CROSS VANE	11+77.58	11+98.41	21
RIFFLE	11+98.41	12+38.41	40
CROSS VANE	12+38.41	12+60.41	22

CONSTRUCTED RIFFLE DETAIL

NOT TO SCALE

NOTE:
BOULDER SHOULD BE NATIVE STONES OR SHOT ROCK, ANGULAR AND OBLONG, WITH AN AXIS APPROXIMATELY 3FT L_x, 2FT W_x, 2FT D

QUANTITIES:
75 TONS - #57 STONE
45 TONS - RIPRAP, CLASS I
60 TONS - RIPRAP, CLASS B
50 TONS - BOULDERS
300 SY - GEOTEXTILE FOR DRAINAGE

PROJECT REFERENCE NO.	SHEET NO.
BP14.R006	2B-3
RW SHEET NO.	
HYDRAULICS ENGINEER	
10/9/2025	
NORTH CAROLINA PROFESSIONAL SEAL 029984	
DAVID P. BOCKER	
DOCUMENT NOT CONSIDERED FINAL UNLESS ALL SIGNATURES COMPLETED	
GRAPHIC SCALE	
20 10 0 20 40	
PLAN	
N V 5	
NV5 ENGINEERS & CONSULTANTS, INC. 3300 REGENCY PARKWAY, SUITE 100 CARY, NC 27518 P: 919.851.1912 www.NV5.com NC License # F-1333	